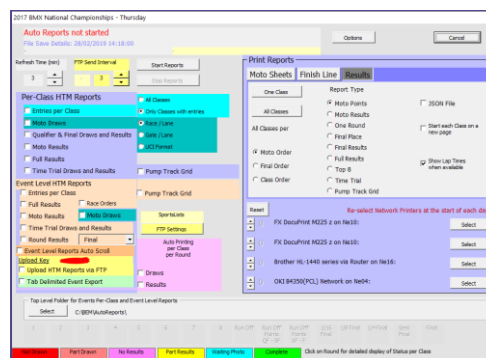


Bmx Event Manager®

Report & Result Display

RRD

4 Cruiser Seniores II, Moto 1 Gate 1			5 Cruiser Seniores III, Moto 1 Gate 1		
L1	5	Christoph KANIA NRW	L1	6	Andreas ENDELEN BAY
L2	816	Marco EISENSCHMIDT NDS	L2	2	Joachim LEINERT NDS
L3	3	Thomas DUCKHORN BRE	L3	44	Udo WAGNER WIT
L4	-	-	L4	-	-
L5	-	-	L5	-	-
L6	-	-	L6	4	Michael PETER BBA
L7	712	Christian REUPKE NDS	L7	11	Mario GRÖNING NDS
L8	358	Arno NEUMANN BRE	L8	62	Uwe SCHUPPE BAW



Screen Based Call-up

Auto Report Generator

Author:	Lyndon Downing - Park Orchards BMX Club
Phone / WhatsApp:	+61 418 363 231
E-mail:	Lyndon.Downing@bigpond.com
Program Version:	10.21.x and 11.21.x
Document date:	6 th June 2020
All feedback (good and bad) appreciated.	

CONTENTS

PROGRAM OVERVIEW – RRD VERSION 10/11.21.5	2
SYSTEM REQUIREMENTS	2
RRD SET UP	2
Installation	2
FILES	2
Program Files	2
Event Files (XL Workbook)	2
Work file _RRD.BEM	2
DETAILED USER GUIDE.	3
RUNNING THE PROGRAM	3
Main Menu	5
Result Type Group	5
Display Classes in Group	5
Display Screen Set Up Group	5
Run Display Button	5
Multi Event Set Up Button	6
Screen Call Up Button	6
Rider Moto Sheet Menu	8
AUTO REPORTS	10
HTML Per-Class Reports	10
Print Reports Group	15
Public On Track (Points Café) Group	17

Program Overview – RRD Version 10/11.21.5

RRD is a companion program to BMX Event Manager (BEM) designed to be used primarily in conjunction with BEM at events where a second, third or more PCs are connected via a network or run on the scoring PC where it supports dual monitors. RRD has facilities to allow progressive upload of results during an event to the eZeventing web site or to the SportsLists phone App, screen based call-up, monitoring of the event status, send printed reports simultaneously to up to four printers, create JSON format start lists and on an operator selected refresh time update, individual per class HTML reports of moto draws, results etc. for subsequent use on a track based intranet.

RRD does not perform any updates to the event file. Read only copies are opened as required.

This document is to be read in conjunction with the BEM User Guide.

System Requirements

Refer to the BEM User Guide.

RRD SET UP

Installation

The RRD program is bundled with and included in the BEM installer (MSI) package are installed in the pre-programmed folder as a complete BEM package. **eg C:\BEM\Programs\Report.**
The event files can be in any convenient directory. Eg C:\BEM\Events.

Files

The following is a brief description of the key files installed by the installation MSI file.

Program Files

RRD2K3.XLS

This file is the only one the user opens to run the report & results display. It contains the macro and dialogue sheets.

Common files with BEM are:

Report Template files (all with .231 extension), BEMPREM.231 and set up file BEM_SET.XLS.

Event Files (XL Workbook)

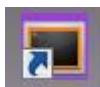
???????.BEM (based on TEMPLATE.BEM) where ??????? is an arbitrary name given to the workbook containing the data for one event. The event files can be in any directory, eg C:\BEM\EVENTS. An event file (workbook) contains details specific to one event.

Work file _RRD.BEM

RRD creates a working copy of the selected event file _RRD.BEM to avoid conflicts when RRD is used on a PC networked to the PC used for scoring.

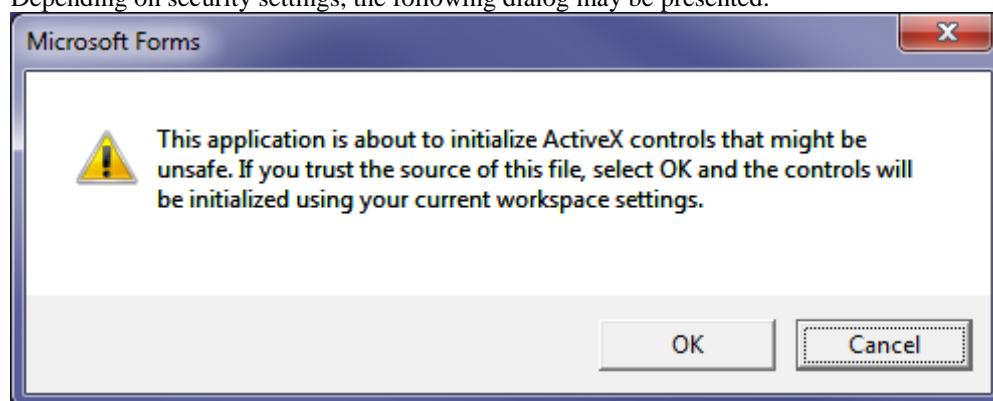
DETAILED USER GUIDE.

RUNNING THE PROGRAM



The installed desktop shortcut runs the file RRD2K3.XLS to start the program. If Excel prompts to disable or enable macros, click on the “Enable Macros” buttons.

Depending on security settings, the following dialog may be presented:



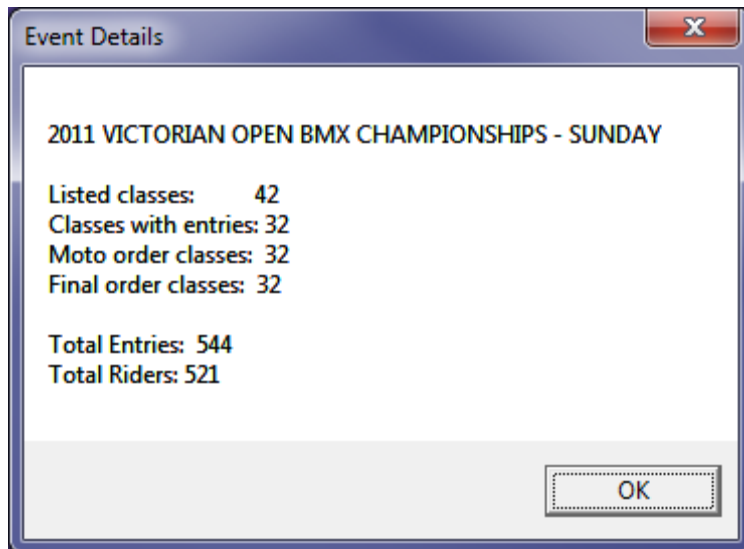
Answer OK to this prompt.

A dialogue box is presented to select the Back up copy of the Event file to use.

For security and to avoid data integrity issues with the main scoring program, the operator should ALWAYS select the back-up file (i.e. with a BU_ prefix), not the main event file.

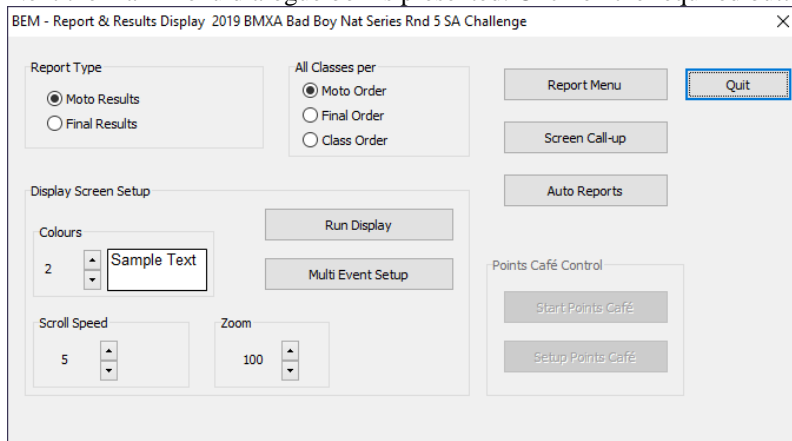
Should there be a requirement to open a “real” event file and not the back-up copy, then this is permitted by answering the appropriate prompts.

On initial opening the event file a number of sanity checks are performed on the database and a profile is built for each class. Refer to the section Error and Warning Messages for detailed information. A dialogue box is presented as a reminder as to the status of the race and final order and number of entries. In the example below, 42 classes are listed in the Event Sheet of which 32 have entries and 32 are included in moto and finals order, 544 entries are in the database from 521 riders. Note that Total riders will be shown as "?" if licence numbers are not entered for all riders as multi class entries are determined on licence number.



Main Menu

Next the main menu dialogue box is presented. Click on the required button.



Result Type Group

The result type selection is used for the Run Display features.

Moto Result Option

This report includes Total Points and individual results for motos 1 – 8.

Finals Results Option

This report includes Final Placing, total points from motos, individual results from sixteenth, eighth, quarter semi finals and run-offs.

Display Classes in Group

This selection is used for the Run Display features. This allows the operator to select the order the classes are presented in the HTML report or the continuous display.

Display Screen Set Up Group

The selections from this group determine the appearance of the Continuous Results Display.

Colours

Eight foreground & background combinations are available for selection.

Scroll Speed

This selection controls the stepping rate of the display.

Zoom

Changes the display window zoom setting from 50% to 200%. Some experimentation is usually required for the optimum setting.

Run Display Button

NOTE: This older results display has been left in the program as it still is used occasionally however the facilities offered are vastly inferior to the newer On Track Points Café. The author suggests therefore that users move to using the On Track facilities.

Using the Result Type and Class Order selections, a rolling continuous display of the results is started. The data is updated from the event .BEM file after each pass.

Multi Event Set Up Button

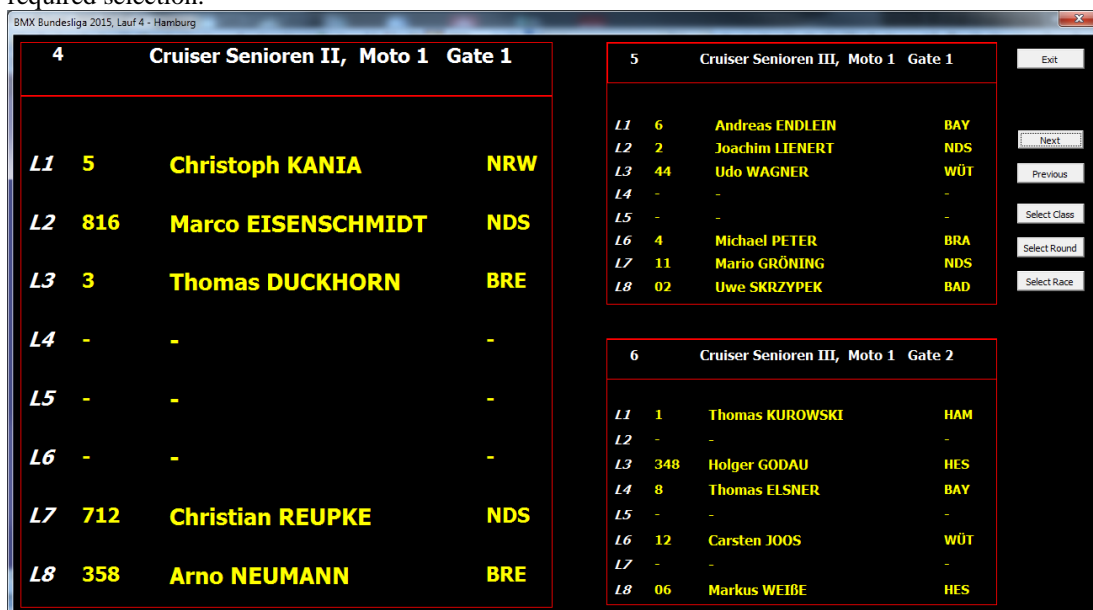
This brings up a further selection to allow up to six event (.BEM) files to be scrolled through the display or selected where multiple event files are required for the Points Café.



Screen Call Up Button

The Screen Call Up allows call up (and possibly commentary) to be done from the screen as an option to paper based reports. Ideally via a networked PC but could be done using a “Memory Stick” transfer once all changes are finalised.

Three races are shown on the screen at one time. The active selection button is changed to minimise the number of mouse clicks so for the majority of cases, simply pressing the “Enter” key can make the next required selection.



REPORT MENU

The report menu allows the standard BEM reports to be previewed, printed or pasted to the clipboard, output to an HTML format file or for selected stage start lists (aka race sheets), generate JSON format files for importing into video overlay or other applications.

The screenshot shows the 'Report Menu' window for the '2019 BMXA Bad Boy Nat Series Rnd 5 SA Challenge'. The interface is divided into several sections:

- Report Type:** Includes radio buttons for 'Preview' (selected), 'Clipboard', 'Printer', 'HTML', and 'JSON'. It also features a 'Copies' spinner set to 1, a 'Collate' checkbox (checked), and an 'HTML Auto Scroll & Rate' section with a 'Scroll' checkbox (unchecked) and a rate spinner set to 60.
- Moto Sheets:** Contains 'All Classes' and 'One Class' buttons. Under 'Order', 'Class' is selected. Under 'Format', 'BEM' is selected. Other options include 'List: Race / Lane', 'List: Gate / Lane', 'UCI', 'LZR', and 'R.ZL'. A 'Motos' section has 'Up to Final' selected and an option to 'Include extra moto for class without final'.
- Result Sheets:** Includes 'One Moto' and 'All Motos' buttons. Under 'Races / page', '9 (landscape)' is selected. Other options are '4 (portrait)', '1 (3 pencilers)', and '.5 (5 pencilers)'. A 'Manual Score' section has 'One Moto' and 'All Motos' buttons, with 'Full Grid' selected.
- Options:** Contains an 'Exit' button.
- Lists:** Includes buttons for 'Riders by Class', 'All Entries', 'Non Payers', and 'Riders by Club'. An 'Entries per Class' section has buttons for 'Class Order', 'Moto Order', and 'Final Order', with 'Include moto numbers' checked.
- List Results:** Includes 'One Class' and 'All Classes' buttons. Under 'Report Type', 'Moto Points' is selected. Other options include 'Moto Results', 'Final Place', 'Final Results', 'Full Results', 'Top 8', and 'Time Trial'. Checkboxes for 'Start each Class on a new page', 'Show Lap Times when available', and 'Show Start Reaction when available' are all checked. An 'All Classes per' section has 'Moto Order' selected.

All reports with the exception of the Rider Named Moto Sheets are the same as generated by the BEM program. Please refer to the BEM User Guide for details of these reports.

Rider Moto Sheet Menu

This button brings up the Rider Moto Sheet dialog to select the format and sorting of individually named moto sheets for each rider. Note that this can produce a very large report.

Report For Group

Selections are made as to the scope of the report.

One Class. The operator is prompted to select the class.

One State. The operator is prompted to select the State. The report is collated with distribution sheets for each Club in the selected State.

All Entries Alphabetical. All entries in the event, sorted by name with no distribution sheets. For use where moto sheets are handed out at registration.

All Entries by Class. All entries in the event, sorted by class with a distribution sheet per class.

One Club. The operator is prompted to select the Club.

One Country. The operator is prompted to select the Country.

All Entries by Coordinator. With this option, the report is collated by the selections made in the Group for Coordinators by: group.

All Entries by Team Manager. This option enables selection of Moto draw reports in List format, Moto Results and individual Stage Draws with riders grouped by Team Managers for the operator selected level of Club, State and/or Country.

Collate for Coordinators / Team Managers by:

The selections of Club, State and Country in this section apply when either the All Entries by Coordinator or All Entries by Team Manager option is selected.

Where the "Print Coordinator Cover Sheets" option is selected, a distribution sheet is printed for each group with the box checked.

Eg if Club and State are checked then the report will consist of:

- a distribution sheet for the first State
- a distribution sheet for the first Club (alphabetical) in the State
- named moto draws for all members of the first Club
- repeated for all Clubs within the State
- repeated for all States with riders the event

Moto Sheet Format

The operator can select the required format of the moto sheets to be printed. Note that the UCI format sheets are only enabled where the entire event consists of non-rotation (UCI style) moto draws.

Start Report Button

This starts the report to screen or printer depending on the output selection from the Report Dialog. The writer does not recommend use of this button except for small events as there is no way to interrupt the output until the end of what can be a very long report.

Cancel Button

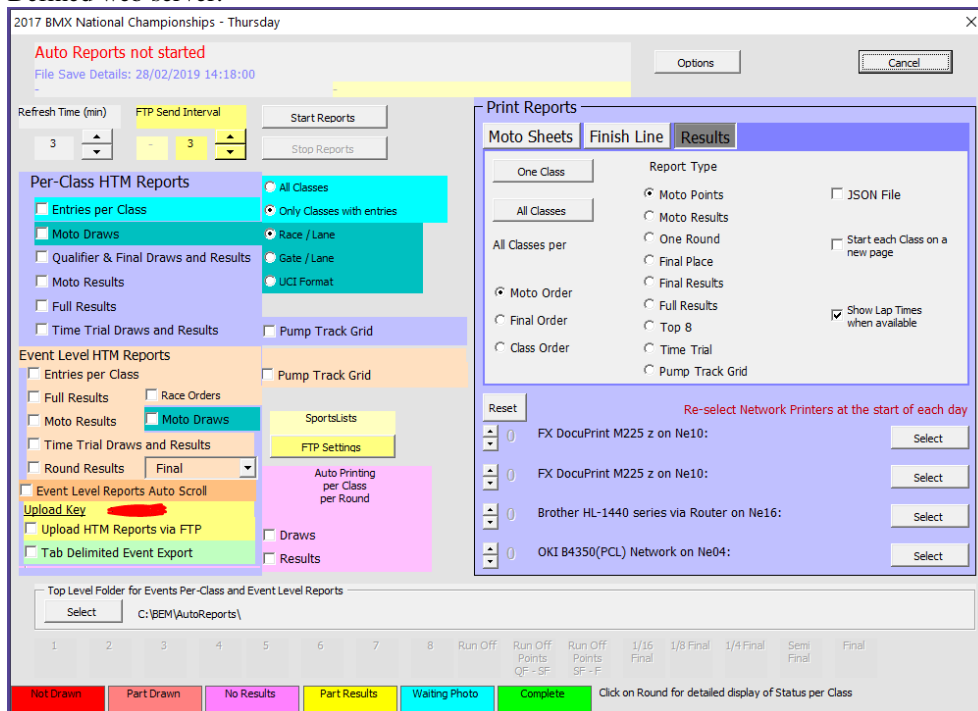
Exit from this dialog to the Report Dialog.

Start Pause Mode Button

Similar to the Start Report Button except the output is paused every 20 pages. The report can be continued or cancelled at this time.

AUTO REPORTS

The Auto Reports functions are designed to be used on a second PC at an event to generate reports as required leaving the main PC operator to concentrate on results entry. Facilities allow monitoring of the event status, print selected reports on up to four printers and periodically generate selected HTML results for local viewing and/or upload to eZeventing web site, SportsLists phone App or a User Defined web server.



HTML Per-Class Reports

The first step for the Auto Reports is to select the **Top Level Folder for HTML Reports**. E.g. D:\BEM\AutoReports\. When the **Start Reports** button is clicked and any of the HTML reports have been selected, the program will create an Event Folder under the top level folder then under that, a folder per Class where each of the selected per class HTML report(s) are stored. When the **Refresh Time** expires, a check is made for any updates to the event file (remembering that you should have selected the back-up file, not the main event file) and if a change has been made, all reports are re-created before the timer is re-set to continue the cycle. Where FTP Upload of HTML reports is enabled, the **FTP Send Interval** controls how often the selected reports are updated on the eZeventing web site. This setting is a multiple of the Refresh Time setting.

Event Level HTML Results.

The options in this group allow selected Event Level HTML results to be generated and stored in the Event Folder (under the Top Level Folder) and are updated at each Refresh Time interval if the back-up file has changed. Where the Upload HTML Reports via FTP function is enabled, these reports are sent to the Event Reports folder on the eZeventing Live Results site.

Where the Event Level Reports Auto Scrolling is selected, the **Moto Results and Round Results** can generate auto scrolling HTML result files that can be used for public display at events. Note the Auto Scrolling option is designed where the report(s) are to be viewed on a web browser locally and not normally selected when uploading results to eZeventing or SportsLists.

For **Round Results** when the “**All non Moto**” option is selected, result reports for each stage after the motos will start to be generated when at least one class in the round has been drawn.

TAB delimited Event Export.

The **TAB delimited Event Export** generates a delimited text file export of the event file in the Event Level Folder. Envisaged use of this report is for subsequent import into a third party database or web server for near real time results distribution but now largely superseded by the introduction of the FTP upload of results facility.

Spontaneous per Class per Round Printing

Run in association with the Stage Status Display, reports can be spontaneously printed to all printers with copies set to more than 0.

Use of this facility is typically used to send reports to remote printers for announcers, notice board posting and media office.

Auto Printing
per Class
per Round

Draws

Results

Draws prints the draws for each Class for each Stage after the motos as it is drawn.

Results prints the results for each Class for each Round when scoring for that round is complete for the Class.

Upload Reports via FTP.

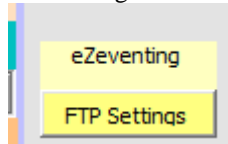
The upload of HTML or JSON Results Files using FTP can be directed to eZeventing web site's Live Results, SportsLists phone App or a user defined web server so that event results can be progressively updated on the web server during the event. Note that an Internet connection is required at the event (typically wireless).

For SportsLists, register your event at www.sportslists.eu or contact support@sportslists.eu to register your event and obtain an Upload Key.

For both eZeventing and SportsLists, this feature in RRD requires an event specific Upload Key from the respective provider which is entered in BEM (not RRD) for the event via the BEM Options screen.

FTP Upload Destination

The selection of the current FTP upload destination is shown above the FTP Settings button with eZeventing as the selection in this example.



To change the FTP destination, click on the FTP Settings button in Auto Reports to open the FTP Settings screen.

To change between eZeventing and SportsLists, select the required destination then click Close.

Should there be a requirement to upload result to a user defined destination, please contact lyndon.downing@bigpond.com for your Unlock Code to enable this option.

Once the unlock code is entered, custom user settings can be entered for FTP Server, FTP User Name and Password then saved by clicking on the "Save User Settings" button.

When the upload is enabled, the selected Per-Class and Event Level HTML reports are uploaded each "FTP Send Interval" to the selected Live Results. Note that by clicking the Update Now button triggers an immediate update if the back-up file has changed subsequent to the previous update.

To reduce the data upload costs and minimize the processing time, the suggested strategy for the management of these reports is to only have enabled those reports that are relevant for the stage the event is at. E.g.:

- Entries per Class would not need to be updated once racing commences.
- Moto Draws would usually require only a once only upload.
- Qualifier and Final Draws should not be enabled until the start of the last round of motos.
- Moto Results would be enabled once racing started and disabled once the motos are complete.
- Full Results should only be selected once the event scoring is fully completed.
- Time Trial results need only be enabled until the Time Trial (if run) is completed.
- Race Orders should only need to be a one off upload unless changes are made.
- Event Level Full Results, Moto Results & Round Results need only be done as a once off when the event scoring is fully completed.

Typical PC Setup.

The typical PC setup for running BEM and RRD for uploading results is as follows.



I.e. BEM and RRD running on separate PCs connected to a local network with a USB Wireless adaptor to provide internet access to upload the results to the selected provider.

One issue that has shown up on several PCs is that depending on the Operating System type and version and the link speed of the two interfaces, the RRD computer is confused as to which of the two network connections (local wired and wireless internet) is the actual internet connection and therefore attempts to send the results via the local wired connection.

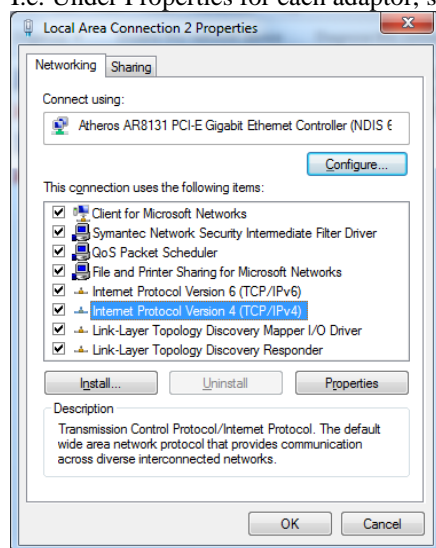
The workaround for this problem is to set the TCP/IP Metric to a fixed value for each adaptor (local and wireless).

To configure the Automatic Metric feature:

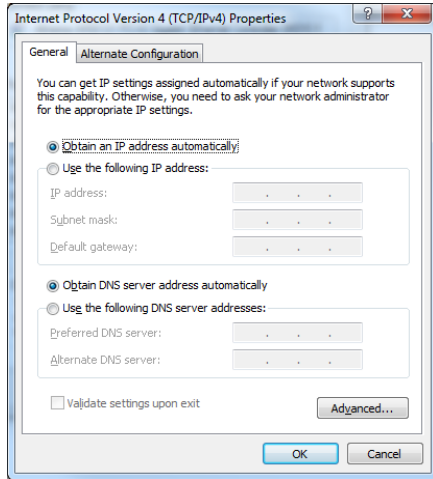
1. In Control Panel, double-click **Network Connections**.
2. Right-click a network interface, and then click **Properties**.
3. Click **Internet Protocol (TCP/IP)**, and then click **Properties**.
4. On the **General** tab, click **Advanced**.
5. To specify a metric, on the **IP Settings** tab, click to clear the **Automatic metric** check box, and then enter the metric that you want in the **Interface Metric** field.

Suggested values are 1 for the internet connection and 10 for the local connection.

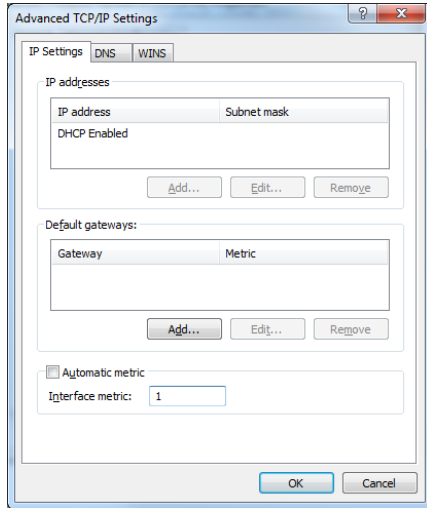
I.e. Under Properties for each adaptor, select TCP/IP then click on the Properties button



Click on the Advanced button



Uncheck "Automatic metric" and set the Interface metric to 10 for the local connection and 1 for the internet connection.



Stage Status Display.

The **Stage Status Display** operates when Auto Reports are active and gives a visual display of the event status at the bottom of the dialog box. For each round applicable to the event, a colour code is used to show the status. I.E.

Red: The stage is applicable but heats have yet to be drawn.

Pink: Some but not all draws exist for the round.

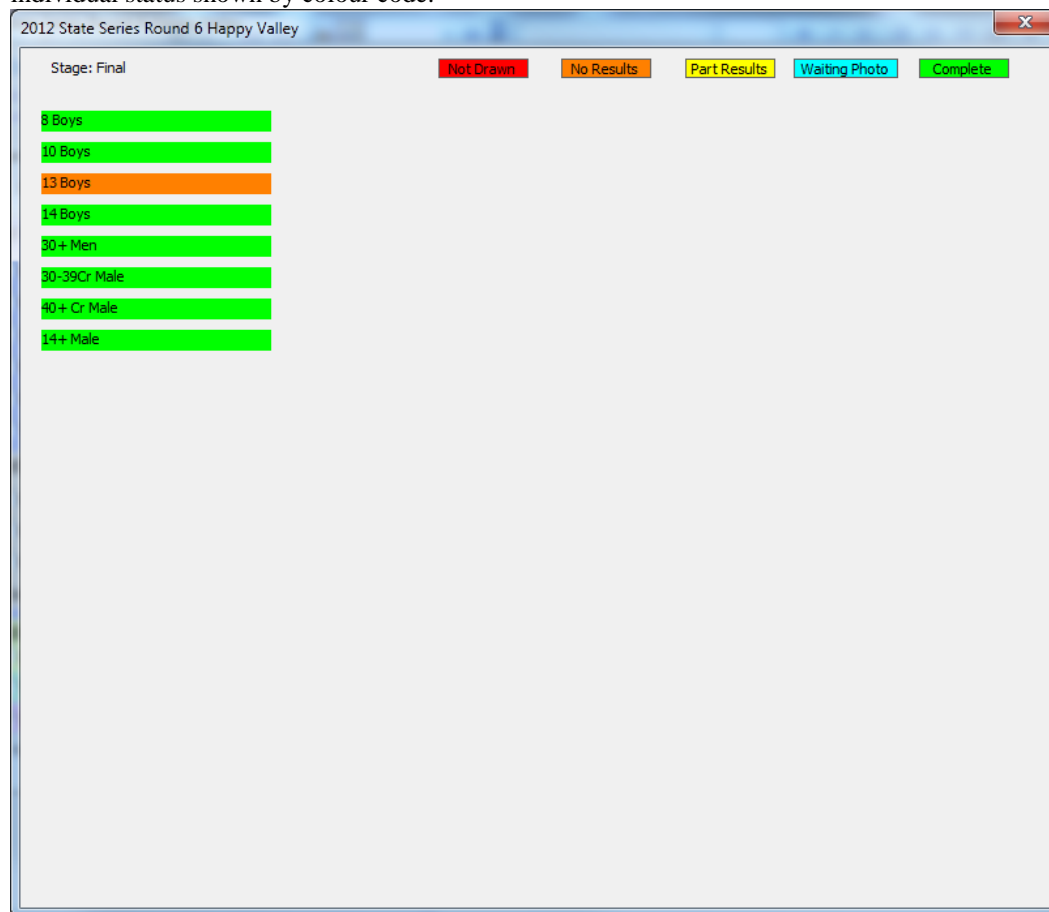
Orange: All draws for the round are complete but no results have been entered.

Yellow: All draws have been done and some but not all results have been entered.

Blue: Photo finish result entered awaiting resolution.

Green: All draws and results are complete for the round.

By clicking on an individual round, each class that is applicable to the round is shown with its individual status shown by colour code.



Print Reports Group

The print reports group operates independently to the auto reports. Three tabs enable selection from Moto sheets, Finish Line sheets and Result reports. Reports may be sent to up to four separate printers, e.g. staging, announcer, team manager area and commissaries.

In the Moto Sheets group, selecting JSON File enables the operator to generate JSON format start lists for importing into other applications such as video apps to create overlays for live streaming. Similarly in the Results group, selecting the JSON file option enables the operator to generate selected results reports as a JSON format file.

Select buttons are used to select the required printer(s)

Spinners are used to select the number of copies sent to each printer. A zero value for all printers prompts the operator to cancel or do a print preview to screen.

The **Reset** button sets the number of copies for all printers to 0.

QUIT

The current event workbook is closed and the operator is prompted to open a new event file. Selecting “No” will exit from the program.

Public On Track (Points Café) Group

This facility has been removed from all versions from 3.10.0 being superseded by the live web results available via SportsLists web and SportsList Lite phone app.

END OF DOCUMENT